



E&E SPECIAL PRODUCTS
 7200 MILLER DRIVE
 WARREN, MI 48092
 586-978-3377 / 586-978-3378 FAX

Load Bar Actuator

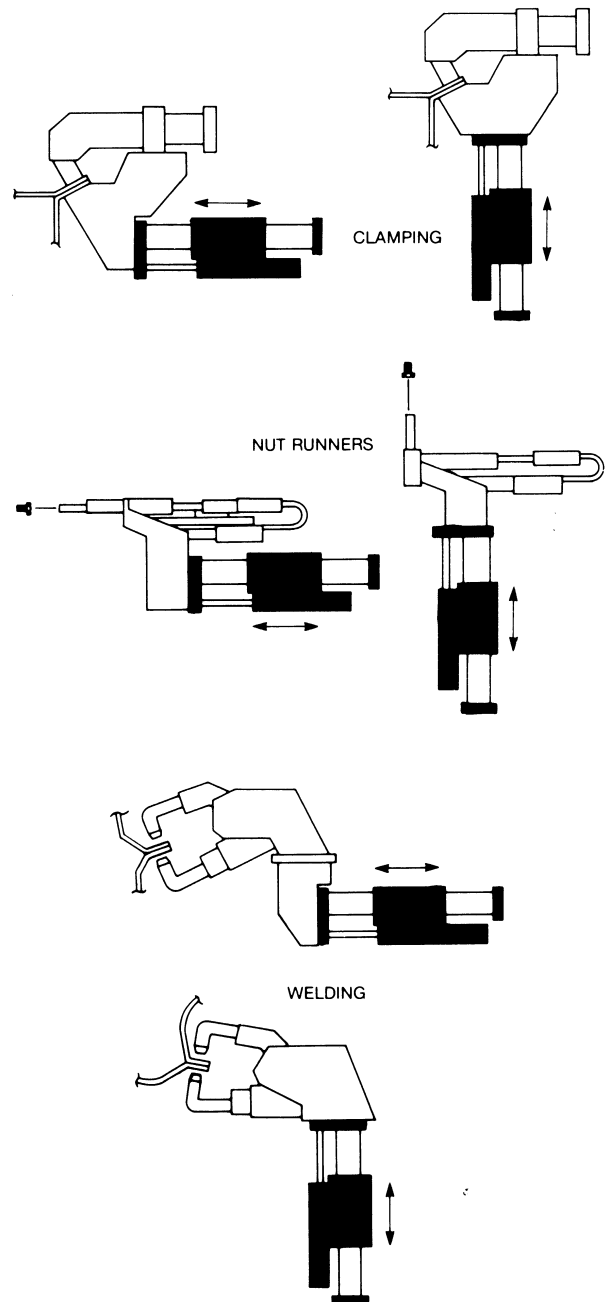
Typically used for shuttling, clamping, indexing, welding and fastening applications, E&E Load Bar Actuators reach for work, up to 12" max., in 1/4" increments.

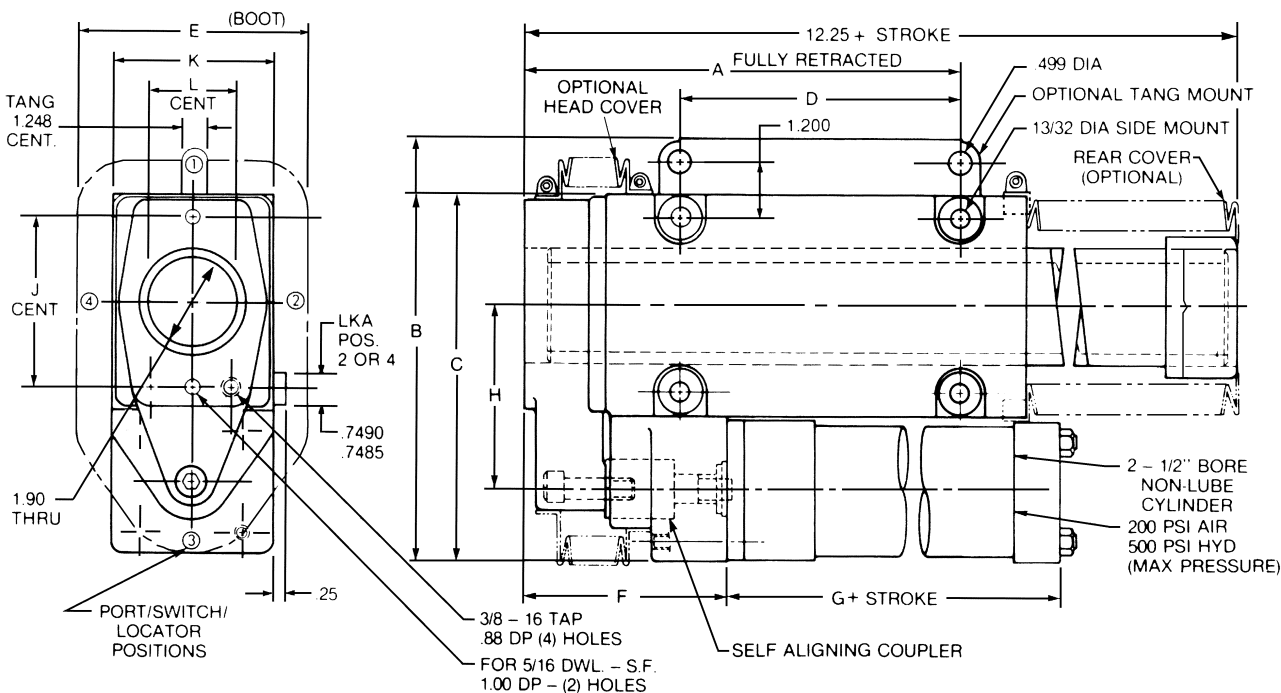


APPLICATION

DESIGN FEATURES

- Superior accuracy
- Cost effective
- Compact, rugged steel construction
- High load capacity, 200 lbs. max., on center for 12" stroke unit
- Symmetrical – eliminates "shown opposite" ordering
- Universal mounting styles, constant mounting pattern (not affected by stroke)
- Uni-directional load application, adaptable for multi-directional, modular actuation
- Optional electric actuation; consult factory
- Through service passage for air, electric, hydraulic
- Position sensing available
- Multiple units can be used for greater loads
- Special stroke lengths available





CAD FILE NAME	PART NUMBER	DIMENSIONS										
		A	B	C	D	E	F	G	H	J	K	L
LB25	LB 25	9.350	9.00	7.80	6.0000	5.00	4.350	4.00	3.90	3.7000	3.500	1.750

ORDERING INFORMATION

Model	Stroke	Port Pos.	Mtg. Style	Locator Pos.	Options
LB25	8	2	LKA	2	HC-RC-CWS4
LB25	2.50 Sq. Bar with 2 1/2 Bore Cylinder Rated a 250 PSI Air 500 PSI Hyd. Non-Lube with Cushions Both Ends				
Stroke	1/4 through 12 in. by 1/4 in. Increments. Actual Stroke .050 Less than Nominal				
Port Position	2, 3, or 4				
Mtg.Style	LKA = Extended Locator Keys - Pos. 2 or 4 (Mounted closest to cylinder unless otherwise specified) HKA = Side Mount (No Locators) TANG = Tang Mount				
Options	HC = Head Cover RC = Rear Cover CWS = Cylinder with Namco Switches - Pos. 2, 3, 4				

Linear/Rotary Motion